

2014-15 Season • www.quickcenter.com



Fairfield
UNIVERSITY



Monica Scarlato

The Quick Center is pleased to commission the work of Norwalk-based artist Monica Scarlato in this unique collaboration inspired by Fairfield University's 2014-2016 theme of Water. Monica's work, *Deep into My Ocean*, so boldly represents the exuberance, color, and fluidity of the 2014-2015 season of performers. We can sink ourselves into the sublime hues of her work much in the same way we can treat ourselves to the colorful richness of every single performer.

Born in Bogota, Colombia, it has always been a dream of Monica's to express her visions through the arts. While attaining her graphic design training, Monica began to sketch these visions but they didn't materialize until the birth of her daughter in 2006. Since then, Monica has delivered abstract art consisting of the bright colors and geometric shapes that have become her signature style. She is passionate about her art and has demonstrated her unique style at various major festivals and art shows.



Stay Connected!

f facebook.com/fairfieldquickcenter

t @fairfieldquick

✉ fairfield.edu/artefacts

🌐 quickcenter.com

📞 (203) 254-4010

Bold, Exhilarating, Unforgettable. Be a part of the Quick Center experience!

Whether you're seeking the thrill of experiencing an "unknown" artist for the first time or hoping to finally get in the room with an artist you've waited for years to see, the Regina A. Quick Center for the Arts at Fairfield University is committed to providing unforgettable experiences that make you feel right at home. Join us as we engage with artists from around the world who excite, entertain, and challenge our everyday views.

There is no better way to guarantee the best seats in the house than by becoming a series ticketholder or creating your own series through our *My Picks* option! Learn more on our order form on page 24.

Artist Statement

Deep into My Ocean is based on the Water theme and on my own deep emotions of love and freedom. I loved creating this piece because it somehow brought me back to life as an artist. I feel that my paintings are completely related to who I am and what I like to do for people...make them happy.

Save **20%** when
you subscribe!

On-Sale Dates

Sunday, May 4	Subscriptions on Sale
Monday, June 9	Single Tickets on Sale – Members* Only
Monday, June 23	Single Tickets on Sale to the General Public

* Benefit for Members at the 'Friend' Level and above

Opening Weekend!

Broadway's Next H!t Musical

25 30

Friday, September 19, 2014
at 8 p.m.

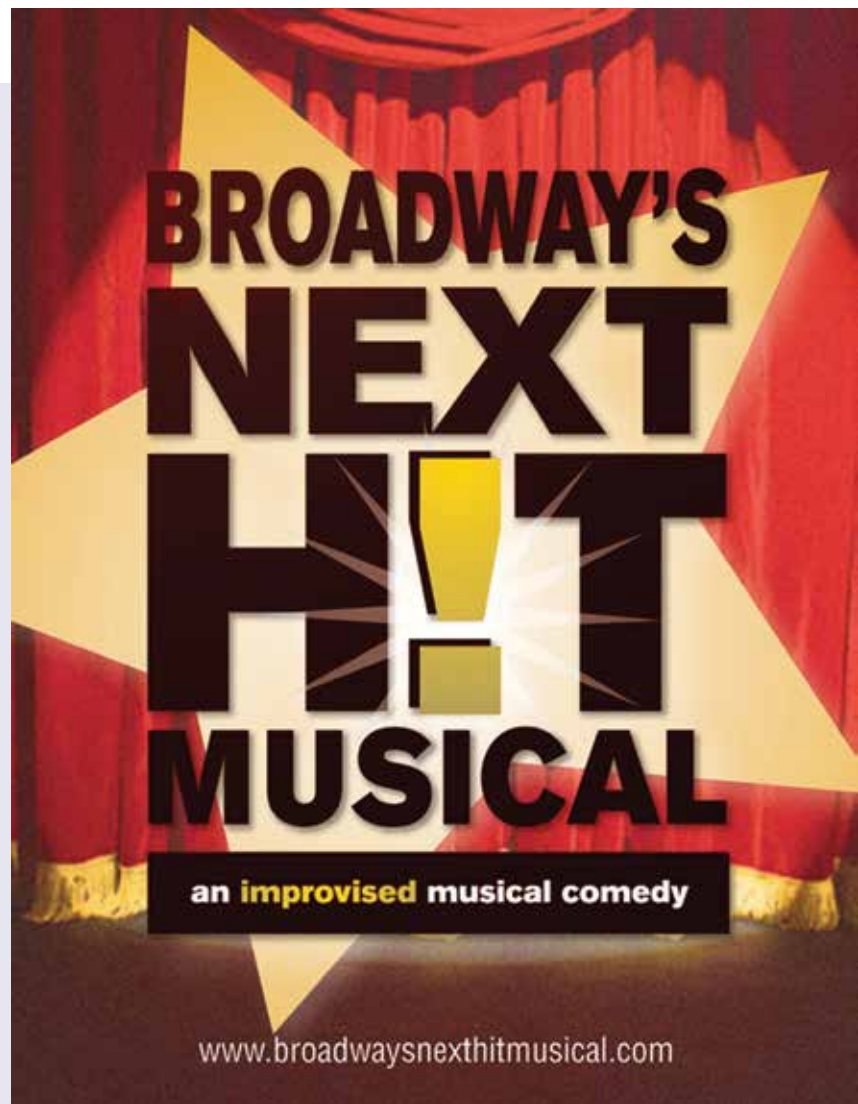
\$45, \$40, \$35 | \$5 Fairfield University students*

Straight from NYC is *Broadway's Next H!t Musical*, the award-winning improvised comedy that is sure to create a spontaneous evening of music, humor, and laughter! Abandoning the same old song and dance, this comedy troupe will turn your favorite song into a full-blown improvised musical – complete with memorable characters, witty dialogue, and maybe even the occasional jazz hand.

You'll love it! After all, you created it!

“ Hilarious. ”

~ *The New York Times*



Nancy & Beth

Featuring **Megan Mullally & Stephanie Hunt**

25 30

Saturday, September 20, 2014 at 8 p.m.

\$55, \$50, \$45 | \$5 Fairfield University students*

Come out for an evening of wicked fun! Emmy Award-winning actress Megan Mullally (*Will & Grace*, *Party Down*, *Childrens Hospital*) and actress Stephanie Hunt (*Friday Night Lights*) met while filming a movie in 2012 and quickly realized while singing together that they had something special. Featured as a musical guest on *CONAN* and touring around the country over the last year, this bawdy and edgy musical duo is joined by their band to perform an eclectic mix of standards. The duo is self-described as “the Andrews Sisters, Honky Tonk, and some Joni Mitchell.”

Please note this performance is intended for mature audiences.





The Garden of Martyrs

Saturday, September 27, 2014 at 8 p.m.
Sunday, September 28, 2014 at 3 p.m.

\$45, \$35 | \$5 Fairfield University students*

The Garden of Martyrs is a riveting new opera by composer Eric Sawyer and librettist Harley Erdman that dramatizes this true case of historical injustice through soaring music, rich orchestration, and a colorful cast of characters. Based on the acclaimed novel by Fairfield University professor Michael C. White, *The Garden of Martyrs* shares the story of two Irish Catholic laborers, Dominic Daley and James Halligan, who were accused of murdering a young man near Springfield, Massachusetts in 1805, and their subsequent trial.

This fully staged production features the Norwalk Symphony Orchestra, conducted by Jonathan Yates, and the best of the region's vocalists, including William Hite, Amy Johnson, Alan Schneider, and Vernon Hartman.

Julian Sands in *A Celebration of Harold Pinter* 25 30

Directed by John Malkovich

Friday, October 17, 2014 at 8 p.m.

\$45, \$40, \$35 | \$5 Fairfield University students*

British stage and film actor Julian Sands presents an extremely personal tribute to a passionate, opinionated, and enigmatic man – Harold Pinter. With personal anecdotes and reflections drawn from their work together, Julian Sands combines Pinter's poems and political prose to create a fresh and intimate insight into the Nobel laureate's literary legacy. Nominated for a 2013 Drama Desk Award, *A Celebration of Harold Pinter* gets to the soul of the man – poet, playwright, husband, political activist, Nobel winner, mortal.

“... when he reads Pinter's poems... you feel the playwright's presence.”

~ *The New York Times*



Orin Grossman and Friends

An Afternoon in Paris

Sunday, November 2, 2014

at 3 p.m.

\$35, \$30, \$25 | \$5 Fairfield University students*

Join pianist Orin Grossman and his talented collaborators for an afternoon of chamber music that celebrates some of the great composers of Paris – Ravel, Debussy, Fauré, and Milhaud.



“ In these days of cookie-cutter pianists, Nick Sanders is a true original. He is already a world-class pianist – and an intriguing and quirky composer as well. ”

~ *The New York Times*

Nick Sanders Trio 25 30

Friday, November 7, 2014

at 7 & 9 p.m. (2 shows!)

\$30 | \$5 Fairfield University students*

Wien Experimental Theatre

Raised in New Orleans and now living in New York City, jazz pianist Nick Sanders is a truly fresh musical voice, wholly original yet clearly shaped by the masters he has studied and embraced. His unique sound is profound, soulful, and rich. Nick recently signed with Sunnyside Records, voted the #1 jazz record label in the 2011 *Downbeat Magazine* critic's poll. His inaugural album, *Nameless Neighbors*, was recorded with his trio, Henry Fraser (bass) and Connor Baker (drums), and produced by Fred Hersch.



“ ...one of the world’s most inventive new generation jazz pianists. ”

-The Guardian (UK)



Vijay Iyer Trio 25 30

Saturday, November 15, 2014 at 8 p.m.

\$40, \$35, \$30 | \$5 Fairfield University students*

Grammy Award nominees and *Downbeat Magazine's* Jazz Group of the Year 2012, the Vijay Iyer Trio is among the most celebrated ensembles in jazz. Receiving the honor of a 2013 MacArthur Fellow "Genius Grant," Vijay Iyer is joined by his colleagues Marcus Gilmore (drums) and Stephan Crump (bass) for an evening of incredible music.



The Touré-Raichel Collective 25 30

Thursday, November 20, 2014 at 8 p.m.

\$40, \$35, \$30 | \$5 Fairfield University students*

The Touré-Raichel Collective brings together Malian guitar virtuoso Vieux Farka Touré and Israeli superstar Idan Raichel to create masterworks of collaboration and improvisation. After a chance meeting at an airport in Europe in 2008, the two artists forged a deep friendship that led to an impromptu recording session and album, *The Tel Aviv Session*, hailed by the media as "an intercultural freeform acoustic masterpiece" (about.com).

Mark O'Connor and Friends – *An Appalachian Christmas*

Sunday, December 7, 2014 at 3 p.m.

\$55, \$45, \$40 | \$5 Fairfield University students*

Take a break from the busy hustle and bustle of the Christmas season and bring your family and friends to a concert that is sure to delight! Hailed as “one of the most talented and imaginative artists working in music” by the *Los Angeles Times*, Grammy Award-winning violinist Mark O'Connor is widely recognized as one of the most gifted contemporary composers in America and is celebrated for his immense talent as a fiddler, incorporating many musical styles into his playing, creating a sound uniquely his own.

Featuring some of Mark O'Connor's favorite musicians from across musical genres, this concert will offer an authentic Appalachian Christmas filled with cherished songs to warm the heart this holiday season!



It's a Wonderful Life: Live from WVU Radio Theatre

Friday, December 12, 2014 at 8 p.m.

\$35, \$30, \$25 | \$5 Fairfield University students*

Almost everyone knows the story of the classic holiday favorite *It's a Wonderful Life*. This live-action 1940s “broadcast” of Frank Capra's beloved film takes us back to the Golden Age of Radio. With humor, warmth, and a few attention-grabbing live sound effects, the WVU studio's “On Air” sign lights up and the heartwarming holiday classic comes to life on our stage.



Mummenschanz

Saturday, January 24, 2015
at 2 & 8 p.m. (2 shows!)

\$55, \$45, \$35 | \$5 Fairfield University students*

In the wordless universe of Mummenschanz, the ordinary becomes extraordinary when common materials, everyday objects (like toilet paper) and colorful abstract shapes and forms spring to life. Since its three-year run on Broadway, Mummenschanz has toured the globe, entertaining audiences of all ages for more than four decades by creating a playful yet compelling experience through the inventive use of shadow, light, and creative manipulation of objects. This enchanting show is sure to spark your imagination!



The Adventures of Alvin Sputnik: Deep Sea Explorer 25 30

Friday, February 6, 2015 at 6 & 8 p.m.
Saturday, February 7, 2015 at 5 & 8 p.m.

\$30 | \$5 Fairfield University students*
Wien Experimental Theatre



Winner of best solo show at the New York International Fringe Festival (as well as numerous awards all over the world), *The Adventures of Alvin Sputnik: Deep Sea Explorer* is a tiny tale set in the deepest dark blue oceans. Seas have risen, billions have died. Alvin Sputnik is our only hope. He must venture to the bottom of the ocean to find his wife's lost soul and save humanity.

Created by master storyteller Tim Watts of Perth, Australia, this endearing tale is the highly imaginative story of a brave explorer told through the fusion of animation, mime, bubbles, puppetry, projections, and song. Through all the darkness, Alvin takes us on a journey of hope and discovery.

While this show was created for adult audiences, it is appropriate for older children.



“...akin to a theatrical *Wall-E*”

~ *The New York Times*

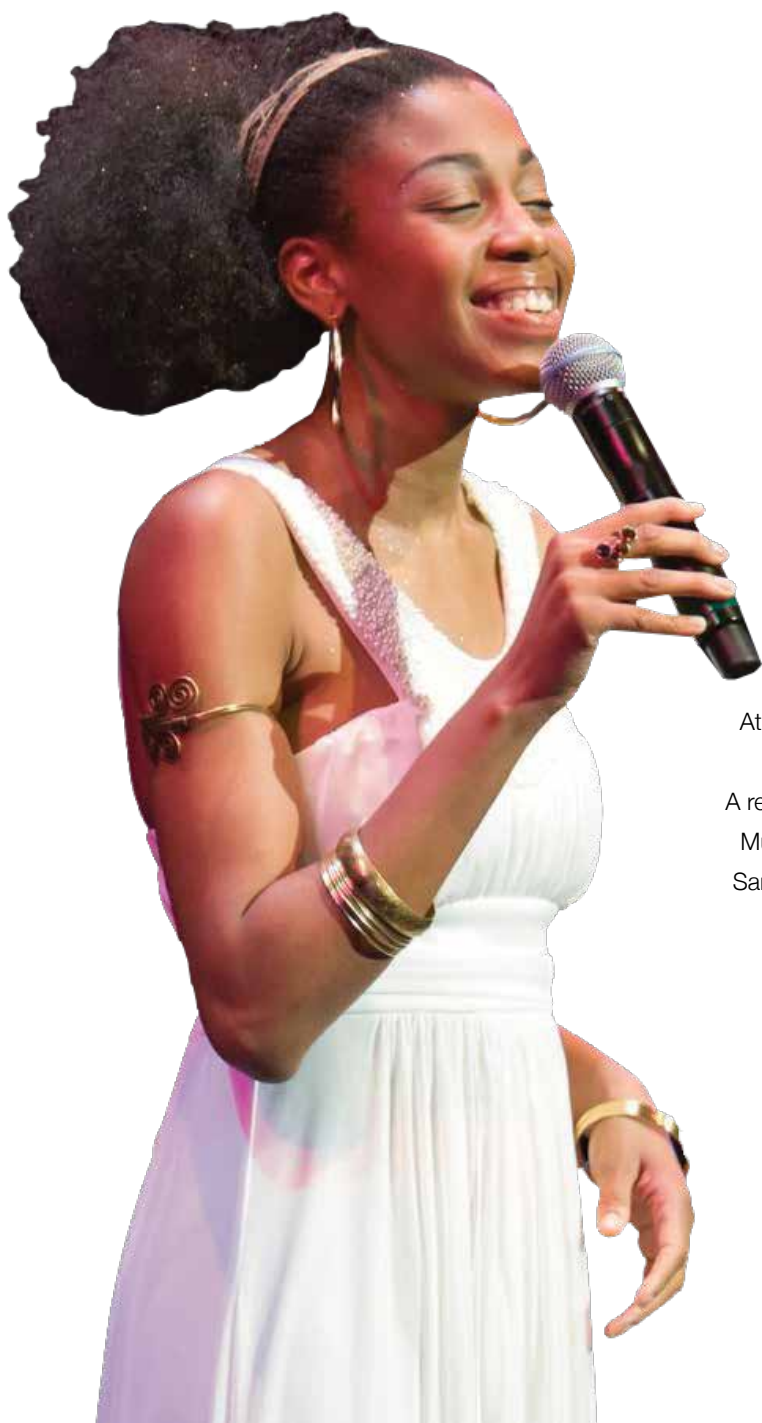
Bridget Kibbey

25 30

Sunday, February 8, 2015 at 3 p.m.

\$35, \$30 | \$5 Fairfield University students*

Lauded for her enthralling artistry and virtuosity, harpist Bridget Kibbey is gaining a reputation for showcasing the broad range of her instrument through multi-genre performances. As noted by *The New York Times*, she “makes it seem as though her instrument has been waiting all its life to explode with the gorgeous colors and energetic figures she was getting from it.” Bridget’s latest work, *The Bridge Project*, celebrates the diverse cultural fabric that shapes our country as she commissions new works by international composers to share stories of their culture and immigration to the U.S. through the captivating and communicative voice of the harp.



Jazzmeia Horn

25 30

Friday, February 13, 2015
at 7 & 9 p.m. (2 shows!)

\$30 | \$5 Fairfield University students*
Wien Experimental Theatre

At just 22 years of age, Jazzmeia Horn has already earned a reputation as a dynamic vocalist who is making her mark on the jazz scene. A recent graduate of New York’s New School for Jazz and Contemporary Music, she was the recipient of the “Rising Star” award at the inaugural Sarah Vaughan International Jazz Vocal Competition in 2012. You won’t want to miss one note of this sultry singer, joined by her quartet.



From the Heart! Ballroom Extravaganza

Saturday, February 14, 2015 at 8 p.m.

\$45, \$40, \$35 | \$5 Fairfield University students*

Treat your Valentine to an exhilarating evening of dance at the Quick Center! World and American ballroom champs will grace our stage for a dazzling showcase that is sure to wow. The evening will include ballroom champions from the Ballroom DanceSport show *We Are the Champions!* performing the Tango, Rumba, Samba, Quickstep, Viennese Waltz, Argentine Tango, and more, including World Cabaret champions Shane and Shannon Jensen.

Arrive early and enjoy a glass of bubbly compliments of **HARRY'S**
WINE & LIQUOR MARKET



Ballet Hispanico 25 30

Saturday, February 21, 2015
at 8 p.m.

\$45, \$35, \$30 | \$5 Fairfield University students*

Ballet Hispanico explores, preserves, and celebrates Latino cultures through dance. Now under the artistic direction of Eduardo Vilaro, the company performs a rich and diverse repertory by the foremost choreographers of our time as well as emerging artists. The works explore the diversity of Latino culture through a fusion of classical, Latin, and contemporary dance powered by theatricality, athleticism, and passion.

“...the most technically accomplished and musical dancers you’ll find in the contemporary sphere...”

~ *The Washington Post*

Irvin Mayfield & The New Orleans Jazz Orchestra 25 30

Sunday, February 22, 2015 at 3 p.m.

\$45, \$40, \$35 | \$5 Fairfield University students*

The heart and spirit of New Orleans will come alive at the Quick Center with the music of Grammy Award-winning trumpeter Irvin Mayfield and the incredible New Orleans Jazz Orchestra. Founded by Mayfield in 2002, the New Orleans Jazz Orchestra has served as a place for musicians to let loose on solos and rhythms that tell the tales of a city steeped in culture, family, history, and the will to persevere. At only 35 years of age, Irvin Mayfield's virtuosity and commitment to jazz music has made him one of the most recorded and decorated jazz musicians of his generation.



Time for Three 25 30

Saturday, February 28, 2015
at 8 p.m.

\$45, \$40, \$35 | \$5 Fairfield University students*

Be prepared to experience an ensemble that defies traditional classification! Comprised of Zachary De Pue (violin), Nicolas Kendall (violin), and Ranaan Meyer (double bass), Time for Three is a classically trained trio who perform music from Bach and Brahms to their own arrangements of the Beatles, Mumford & Sons, Justin Timberlake, and other popular artists. The group first played together while students at Philadelphia's Curtis Institute of Music and after considerable experimentation have evolved into a charismatic ensemble with a reputation for limitless enthusiasm and no musical boundaries.

Order at 1-877-ARTS-396 or quickcenter.com | 12

Shana Tucker 

Friday, March 27, 2015

at 7 & 9 p.m. (2 shows!)

\$30 | \$5 Fairfield University students*

Wien Experimental Theatre

Transcending genre limitations, Shana Tucker is a distinctive “ChamberSoul” cellist and singer/songwriter whose music is an instantly captivating, sultry pastiche of acoustic pop and soulful, jazz-influenced contemporary folk. In addition to touring the country with her quartet, Shana also stars as part of the world-class musical ensemble of Cirque du Soleil’s Las Vegas hit *KÀ*.

“...a delectable combination of folksy acoustic pop and in-the-pocket jazz, topped off with her easy croon.”

~ *The News & Observer*



Russian National Ballet Theatre in *Swan Lake*

Friday, April 10, 2015 at 8 p.m.

\$50, \$45, \$35 | \$5 Fairfield University students*

This esteemed Russian company presents one of the most magical and well-known works from the classical ballet repertoire. With majestic choreography by Petipa, an unforgettable score by Tchaikovsky, and exquisite costumes and sets, it is easy to see why *Swan Lake* continues to earn the adoration of classical ballet enthusiasts and attract newcomers to this magnificent art form.

Chamber Music Society of Lincoln Center

25 30

Saturday, April 18, 2015 at 8 p.m.

\$45, \$35 | \$5 Fairfield University students*

Comprised of an evolving and unparalleled roster of performers, the Chamber Music Society of Lincoln Center is the nation's premier chamber music repertory company. This multi-generational and international selection of expert chamber musicians performs chamber music of every instrumentation, style, and historical period and is based in Lincoln Center's famed Alice Tully Hall. At the Quick Center, pianist Anne-Marie McDermott, violinist Kristin Lee, and clarinetist David Shifrin will be joined by the young powerhouse Amphion String Quartet for a program featuring Stravinsky and Copland.



The Mendelssohn Choir of Connecticut and Festival Orchestra presents *Carmina Burana*

Saturday, May 2, 2015 at 8 p.m.

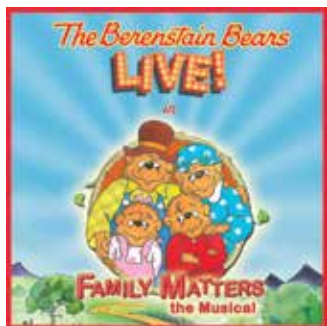
\$35, \$30 | \$5 Fairfield University students*

Join us as we celebrate The Mendelssohn Choir of Connecticut's 30th anniversary with this spectacular evening of music featuring Carl Orff's *Carmina Burana*.



Family Fun Series

\$15 (adults & children) | Become a series ticket holder & see all 3 performances for just \$36!
Join us after each of our Family Fun Series performances for juice and cookies!



The Berenstain Bears LIVE! in Family Matters: The Musical

Matt Murphy Productions

Sunday, October 5, 2014 at 3 p.m.

Recommended for ages 4-8

Adapted from the classic children's book series by Stan and Jan Berenstain, this thrilling theatrical experience weaves together three of their most popular books: *The Berenstain Bears Learn About Strangers*, *The Berenstain Bears and Too Much Junk Food*, and *The Berenstain Bears' Trouble at School*. There's trouble in the treehouse... It's up to Mama to follow the cookie trail and sort things out!



La Maleta (The Suitcase)

Roseneath Theatre Company

Sunday, March 8, 2015 at 3 p.m.

Recommended for ages 8-13

Incorporating both Spanish and English, *La Maleta* is the touching story of Roca, a 10-year-old girl who leaves her native Colombia for North America clutching her suitcase – inside of which she believes her grandmother is hiding. Struggling to adjust to a new language, a new school, and a new way of life, Roca befriends Paz, a boy with many of the same struggles. Opening the suitcase leads them to embark on an adventure where Roca finds the courage, hope, and strength to adapt to her new home.



Ivy + Bean, The Musical

Maximum Entertainment & Atlantic Theatre Company

Sunday, March 29, 2015 at 3 p.m.

Recommended for ages 6-11

Based on the *New York Times* best-selling children's book series by author Annie Barrows and illustrator Sophie Blackall, *Ivy + Bean, The Musical* is the story of an unexpected friendship between two very different second graders. Bean is loud, wild, and goofy. Ivy is quiet and full of ideas. But when Bean plays a joke on her sister, and needs a place to hide, Ivy comes to the rescue. When the two become a team, there's mischief and laughter at every turn—along with lessons to be learned about the challenges and joy of family, friendship, and love.

Want to make your Family Fun Series experience even more special? Join at the Family Membership Level (page 21) and get discounts on tickets as well as an invitation to a special cast Meet-and-Greet after one of our shows!

Quick in the Community



The Quick Center is committed to offering arts experiences to diverse audiences that enrich and further the educational mission of Fairfield University by ensuring a welcoming environment to our audience and encouraging the opportunity to deepen relationships with the artist and create meaningful dialogue. Please visit www.quickcenter.com to learn more about the programs below.

ArtsBound

The ArtsBound series reaches over 4,000 local K-12 school children each year, providing excellent arts experiences at affordable prices. For some children, this will be their first time attending live theatre, and The Quick is committed to making sure it's a positive and educational experience! Educators: Check www.quickcenter.com for ArtsBound School Day performances.

The Quick Connects – Artist Residency Activities

Through workshops, master classes, and lectures, The Quick offers Fairfield University students and members of the community the opportunity to experience hands-on learning with our artists. These one-of-a-kind moments create lifelong memories and deepen the connection between the artist and our community.

Pre-Performance Talks

Prior to some of our events we offer pre-performance talks facilitated by Fairfield University faculty and distinguished guests from our community. We encourage all ticketholders to come early to shows and experience these wonderful (and free) informative talks!

Sound Bites

A NEW Lunch Series at The Quick

12 to 1:15 p.m.

Wien Experimental Theatre

Sound Bites is a new series of FREE lunchtime events held at the Quick Center, each featuring a distinctive topic with enriching information and enlivening performances. We will host a number of events throughout the year including:

Friday, October 10, 2014

Jeffrey Johnson: Opera's Thrift Store; Coats, Pins, Books and the joy of unexpected objects

Tuesday, February 10, 2015

Orin Grossman & Sakiko Ohashi: The Art of Four Hands Piano

Tuesday, March 3, 2015

Brian Torff: Views from the Bassline

Tuesday, April 7, 2015

Gary Alan Wood: Mozart's *Clarinet Concerto*

Bring your favorite lunch treat and we'll provide the beverages! Or have your lunch waiting for you at the Quick Center that day by ordering in advance through Einstein Bros Bagels. To order your specially discounted lunch, call (203) 334-5906 ext. 3 and mention the Sound Bites lunch offer. *Note that orders must be made a minimum of 24 hours in advance.*



Additional dates to be announced soon. Please join our e-mail list at www.fairfield.edu/artefacts for updates.

OPEN VISIONS Forum

Fairfield University's signature lecture series

Single Tickets: \$45 • Save 15% with a subscription, and see all 6 lectures for only \$228!



An Evening with
David Gregory

Monday, September 22, 2014 at 8 p.m.

David Gregory anchors NBC's *Meet the Press*, the gold standard of news programs known for probing interviews and mind-opening discourse. As a veteran political reporter who's covered both presidential and midterm elections, Gregory gives audiences a glimpse inside the often-impenetrable halls where Washington's power players operate. Although his coverage is serious, Gregory is widely respected for his humor in coping with the rough-and-tumble world of the news industry.



Alessandra Stanley & Frank Bruni

“Two From *The Times* – Stanley & Bruni At Large”

Thursday, October 9, 2014 at 8 p.m.

Both writers for *The New York Times*, Frank Bruni, Op-Ed columnist, and Alessandra Stanley, the chief television critic, talk about culture, politics, and the art and anxiety of rendering judgment.



Caryl M. Stern

“I Believe in Zero: Learning from the World’s Children”

Monday, November 17, 2014 at 8 p.m.

Annual Jacoby-Lunin Humanitarian Lectureship

Caryl M. Stern, a longtime child advocate and civil rights activist, was named the President and CEO of the U.S. Fund for UNICEF in May 2007. She has worked closely with the U.S. Department of Education and the U.S. Department of Justice in crafting national education policy, and has participated in several White House education and anti-bias initiatives.

Co-sponsored by the Carl and Dorothy Bennett Center for Judaic Studies. Funded by the Frank Jacoby Foundation.



Robert M. Edsel

“Monuments Men”

Sunday, January 25, 2015 at 3 p.m.

Once an extremely successful entrepreneur of the oil and gas industry, Robert M. Edsel sold everything to relocate to Europe in 1996. Edsel discovered a newfound passion for the arts and architecture, as well as a curiosity about the iconic monuments that survived the carnage of World War II, and the unsung heroes who rose to the occasion to preserve them. Edsel set aside seven years of his life to meticulously search and reveal these “Monuments Men” in the hopes of making their efforts known and recognized. In addition to writing *The Monuments Men* and his debut book, *Rescuing Da Vinci*, Edsel created a non-profit foundation to honor the heritage of the Monuments Men.



Emily Bazelon

“Sticks and Stones: Defeating the Culture of Bullying and Rediscovering the Power of Character and Empathy”

Monday, March 2, 2015 at 8 p.m.

Emily Bazelon is the author of the national bestseller *Sticks and Stones: Defeating The Culture of Bullying and Rediscovering the Power of Character and Empathy*. She is a senior editor at *Slate Magazine*, a contributing writer at *The New York Times Magazine*, and the Truman Capote Fellow for Creative Writing and Law at Yale Law School. She is also a frequent guest on *The Colbert Report* and has appeared on *PBS NewsHour*, *Morning Joe*, *Fresh Air*, *Morning Edition*, and *All Things Considered*.



Jeffrey D. Sachs

“The Age of Sustainable Development”

Wednesday, April 15, 2015 at 8 p.m.

Jeffrey D. Sachs, director of The Earth Institute and world-renowned author, is widely considered to be one of the world’s leading experts on economic development and the fight against poverty. His work has taken him to more than 125 countries with more than 90 percent of the world’s population. Sachs is the recipient of many awards and honors, including membership in the Institute of Medicine, the American Academy of Arts and Sciences, Harvard Society of Fellows, and the Fellows of the World Econometric Society.

The Metropolitan Opera

HD LIVE

Single Tickets: \$25, \$20 seniors, \$10 children/students (including Fairfield University students)

Save with the Met: Live in HD subscription!

\$21/ticket with the purchase of 5-7

\$20/ticket with the purchase of 8-9

\$19/ticket with the purchase of 10

Learn more! Join us before select broadcasts for discussions led by Fairfield University professors as well as distinguished community members. Broadcasts with an asterisk next to the date will have discussions beginning 45 minutes prior to the first broadcast.

The Met: Live in HD subscriber discounts and privileges may not be interchanged with Open VISIONS Forum, Quick Center performances, and National Theatre Live events.

Programs subject to change.

Saturday, October 11, 2014
Giuseppe Verdi's *Macbeth*
1 p.m.* (live) and 6 p.m. (encore)

Saturday, October 18, 2014
Wolfgang Amadeus Mozart's *Le Nozze di Figaro*
1 p.m. (live) and 6:30 p.m. (encore)

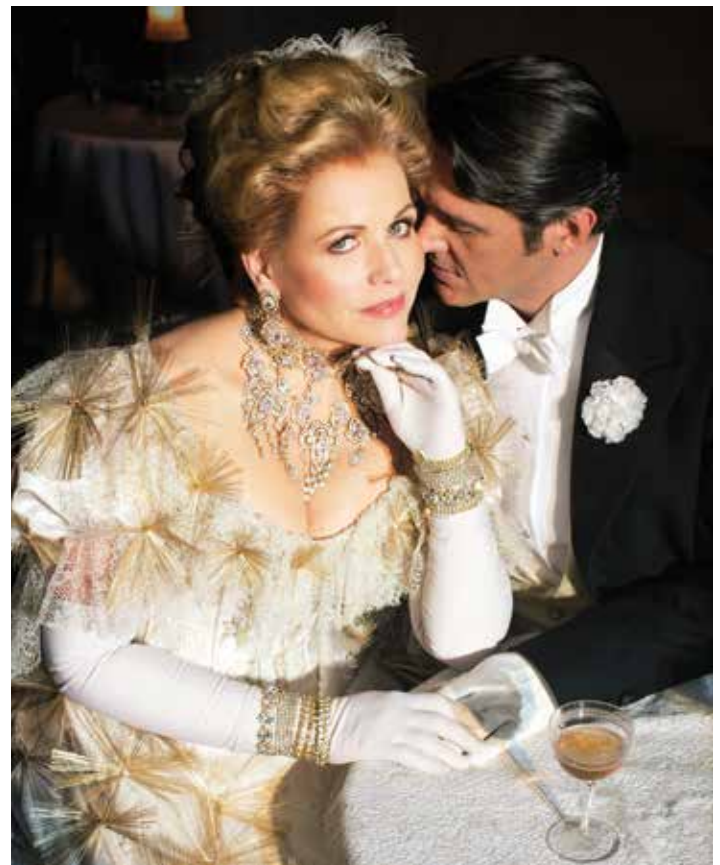
Saturday, November 1, 2014
Georges Bizet's *Carmen*
1 p.m. (live) and 6:30 p.m. (encore)

Sunday, November 16, 2014
John Adams' *The Death of Klinghoffer*
1 p.m. (encore) and 6 p.m. (encore)

Tuesday, December 16, 2014
Richard Wagner's
Die Meistersinger von Nürnberg
12 p.m. (encore)

Saturday, January 17, 2015
Franz Lehár's *The Merry Widow*
1 p.m.* (live) and 6 p.m. (encore)

Saturday, January 31, 2015
Jacques Offenbach's
Les Contes d'Hoffmann
1 p.m.* (live) and 6:30 p.m. (encore)



Sunday, February 15, 2015
Peter Tchaikovsky's *Iolanta* and
Béla Bartók's *Duke Bluebeard's Castle*
1 p.m. (encore) and 6:30 p.m. (encore)

Saturday, March 14, 2015
Gioachino Rossini's *La Donna del Lago*
1 p.m.* (live) and 6 p.m. (encore)

Saturday, April 25, 2015
Pietro Mascagni's *Cavalleria Rusticana*
and Ruggero Leoncavallo's *Pagliacci*
12:30 p.m. (live) and 6 p.m. (encore)

The Met: Live in HD series is made possible by a generous grant from its founding sponsor **The Neubauer Family Foundation**

Global corporate sponsorship of *The Met: Live in HD* is provided by **Bloomberg**

The HD broadcasts are supported by **Toll Brothers**
America's Luxury Home Builder

The Young Artists Series

Sunday, January 25, 2015 at 5 p.m.

Sunday, March 1, 2015 at 3 p.m.

Sunday, March 22, 2015 at 3 p.m.

Free

In collaboration with the New York International Piano Competition and the Stecher and Horowitz Foundation, the Quick Center for the Arts is pleased to bring gifted young pianists in recital three times each year. Whether a classical music lover, teacher, piano student, or a family with youngsters, you will find these concerts offer the perfect opportunity to experience some of the finest young artists in the country – for FREE!

National Theatre Live

Now in its sixth season, NT Live delivers HD broadcasts of stage performances captured live at London's National Theatre, as well as insider footage and interviews. Join us at The Quick for a front-row seat to the London stage!

\$25, \$20 seniors, \$15 children/students, \$10 groups of 10 or more students

Dates and titles to be announced soon. Please join our e-mail list at www.fairfield.edu/artefacts to be alerted when tickets go on sale.

The Pirate Plays

September 24-26, 2014 at 8 p.m.

Wien Experimental Theatre



Stede Bonnet, Gentleman Pirate, and Anne Bonny, Pirate Queen, relive their colorful lives in Fairfield University lecturer Steve Otfinoski's award-winning *The Pirate Plays*. Based on historical fact, the production is directed by Kelly DiMauro and features actors Alexander Kulcsar of Fairfield and Sally Arlette-Garcia. A faculty panel will follow each performance.



Arts & Minds

Did you know that Fairfield University offers a vibrant array of cultural events all year long? There's something for everyone. Join us for:

- exhibitions at the Bellarmine Museum of Art and the Thomas J. Walsh Art Gallery
- performances by Fairfield's Glee Club, Jazz Ensemble, Orchestra, Theatre Fairfield, and more
- lectures, film series, workshops, and events hosted by the centers for Judaic Studies and Catholic Studies, the MFA in Creative Writing, the Studio Art Program and other departments
- book-signings, talks, and family events with nationally known writers and Fairfield professors at the Fairfield University Bookstore downtown
- events highlighting Fairfield University's 2014-2016 area of focus, denoted in this brochure by this symbol



Visit www.fairfield.edu/arts often to get the most up-to-date listings of all that Fairfield University's Arts and Minds programming has to offer you and your family!

Make the Difference! Become a Quick Center Champion and make the arts a vital part of your community!

How can you get involved?

- Be a member and enjoy all of the benefits that come with engaging more personally with the Quick Center staff, artists, and speakers!
- Donate and know that your support will help us continue the programming you've grown to love. (Check to see if your employer offers matching gifts to double your contribution!)
- Be a Quick Center Sponsor and enjoy the benefits of reaching an influential audience!
- Rent one of our beautiful spaces for your next event and get first-class service for your guests!
- Consider leaving a legacy gift that will serve the Quick Center for years to come.

The thrilling, uplifting, and life-enhancing power of the arts is yours to give.

Members enjoy the following Quick Center benefits:

Supporter \$100 and above.

Advanced purchase priority for The Met: Live in HD Series; waived ticket processing fees (initial season order); special Quick Center gift; four complimentary beverage coupons; name listed in the Quick Center Program Book

Non-deductible amount of membership: \$46

NEW! Fairfield University Faculty/Staff/Retiree \$80 and above. All the benefits of the Supporter Level.

Non-deductible amount of membership: \$46

NEW! Alumni \$60 and above. (Available up to five years after graduation.) All of the benefits of the Supporter Level, plus:

Special invitations to events and receptions

Non-deductible amount of membership: \$46

Friend \$250 and above. All of the above, plus:

Advanced purchase priority for Quick Center performances; Buy One Get One Free on up to two tickets to one Quick Center performance of your choice; priority seating on your initial season order; free ticket exchange; lost ticket insurance; invitation to Quick Center special events (with purchase of performance ticket); two additional complimentary beverage coupons (a total of six coupons)

Non-deductible amount of membership: \$86

Artist \$500 and above. All of the above, plus:

Waived ticket processing fees on all Quick Center performances ticket purchases; invitation to Season Preview with Gary Wood, director of the Quick Center; invitation to attend an open rehearsal and backstage tour; special tour of the Thomas J. Walsh Art Gallery; Bring your friends! Two complimentary tickets to one Quick Center performance

Non-deductible amount of membership: \$166

Family Fun Series Membership \$150 and above. All of the benefits of the Supporter Level, plus:

Advanced purchase priority for Family Fun performances; 20% off all full-priced Family Fun performance tickets; invitation to one Meet-and-Greet with the cast of a Family Fun performance!

Non-deductible amount of membership: \$58

Membership at \$1,000 and above offers special privileges tailored just for you. Contact us to learn more.

The Fine Print: Benefits subject to change and availability. The value of the tax-deductible amount will be based on net contributions for each level of membership, after benefit values have been deducted.

Donate

Many people support the Quick Center for the Arts through an annual gift*, which contributes to the quality of programming the Quick Center provides our region, including those in underserved communities. Ticket sales only cover a fraction of the cost of operating a facility that brings world-class artists to your community. Your investment is needed more than ever!

**Gifts are fully tax-deductible to the extent allowed by law.*

To become a Member, renew your Membership, donate, or to learn more, fill out the bottom portion of the subscription page in our brochure (page 25) or visit www.quickcenter.com, e-mail membership@quickcenter.com, or contact the Box Office at (203) 254-4010.

Become a Corporate Partner

For many years, the Quick Center for the Arts at Fairfield University has enhanced the quality of life for our shared community with more than 45,000 patrons attending over 200 events each year.

The Quick Center offers an array of high visibility and specialized benefit packages designed to help you promote your business, thank your customers and clients, reward your employees, and achieve your philanthropic goals. Sponsorship opportunities range from one performance to a series of events with enhancements that provide season-long exposure, promotional recognition, and hospitality benefits.

“Sheaffer chose to sponsor the Quick Center for the Arts at Fairfield University because of the intrinsic link between fine writing instruments and the arts. Their professional and enthusiastic team helped us develop a sponsorship program that supports first class programs and artists and achieves our objective of creating greater brand awareness while building stronger ties with the local community. We at Sheaffer look forward to continuing our mutually beneficial partnership.”



SHEAFFER

~ Gretchen Kenny, Global Brand Manager

For more information, contact Carla Supersano Sullivan '88, director of corporate relations at csullivan@fairfield.edu or (203) 254-4000, ext. 2115.

Rent

Did you know the Quick Center has space available to rent for every type of occasion – personal or professional? Our facility offers superbly defined and equipped spaces with universal wi-fi, ample free parking, in-house catering, and a friendly staff to make your reception, fundraiser, performance, conference, meeting or workshop a success!

“A Night of Music, recently held at the Quick Center for the Arts, Fairfield University was a beautiful, touching and successful event with the help of the professional caring staff at the Quick Center. We couldn't have achieved our goal to raise money for The Lebo-DeSantie Center for Liver and Pancreatic Disease at St. Vincent's Medical Center through St. Vincent's Swim Across the Sound without their help and support. We cherish our partnership with the staff at the Quick Center and look forward to many more successful events there.”

~ Charlene Lebo and Suzanne DeSantie, co-chairs for A Night of Music to benefit The Lebo-DeSantie Center for Liver & Pancreatic Disease at St. Vincent's Medical Center

For rental information, contact Chris Kaplan, assistant director at (203) 254-4000, ext. 2980 or at ckaplan@fairfield.edu or visit www.fairfield.edu/qcrentals.



2013-14 Supporters

Abbey Tent & Party Rentals	Fairfield University Part-Time Studies	New England Foundation for the Arts
Atria Senior Living	Harry's Wine & Liquor Market	Penfield Service Center
Bank of America	Hearst Media Services	Planet Pizza
The Carolton Chronic and Convalescent Hospital	Herman Goldman Foundation	Sheaffer
CDHM Advertising	Humanities Institute of the College of Arts and Sciences	State of Connecticut Department of Economics and Community Development – Connecticut Office of the Arts
Connecticut Humanities	The Inn at Fairfield Beach	Steinway Piano Gallery of Westport
Delamar Southport	iTNCoastal CT	TVeyes
Elizabeth Flavin, Al Filippone Assoc., LLC, William Raveis Real Estate	Jewish Senior Services	<i>Venü Magazine</i>
Este Zarlenga, Vice President - Charles Schwab	Knepler Driving School	The Westport Inn
Fairfield Cheese Company	Max's Art Supplies	Whole Foods
Fairfield County Community Foundation - William and Philip Carlson Fund	Mid Atlantic Arts Foundations	WPKN
	Moffly Media - <i>Fairfield Living Magazine</i>	
	Morris Media Group - <i>Fairfield Magazine</i>	
	National Endowment for the Humanities	

As of publication. A full list of sponsors is available at www.quickcenter.com.

Tickets and General Information

In Person

Box Office Hours:

May 19 – Sept 1, 2014, Mon–Fri,
10 a.m.–4:30 p.m., and prior to performances

Sept 2, 2014 – May 15, 2015, Mon–Fri,
10 a.m.–5 p.m., and prior to performances

Phone

Call a member of our Box Office staff at
(203) 254-4010 or toll-free 877-ARTS-396

Mail

Quick Center for the Arts
Fairfield University
1073 North Benson Road
Fairfield, CT 06824

Online

24/7
www.quickcenter.com

Need help? Reach us by phone or at our e-mail address: boxoffice@quickcenter.com

Ticket Policies

Returns: All tickets are non-refundable, except for cancelled events that are not rescheduled. Tickets may be returned to the Quick Center as a tax-deductible donation prior to the event.

Exchanges: Exchanges must be made in person at the Box Office or returned by mail at least 24 hours prior to the event. A processing/re-printing fee of \$5.00 per ticket applies. Subscribers and Members at the “Friend” Level and above receive free exchanges for tickets of equal or lesser value.

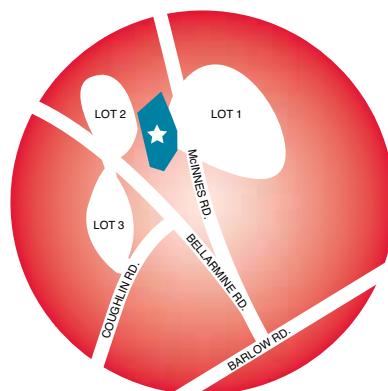
Lost or stolen tickets: Lost or stolen tickets are not the responsibility of Fairfield University.

Late Seating: In fairness to patrons and performers, House Management honors artist’s instructions for appropriate late seating.

Program Change: Dates, prices, and artists listed are correct at the print date. Fairfield University is not responsible for necessary program changes or rescheduling.

Parking

FREE, secure parking is available for our patrons. Please arrive at least 30 minutes prior to curtain time for best parking options. The map to the right notes our three parking lots.



★ = Quick Center for the Arts

Accessibility

The Quick Center for the Arts is committed to providing accessible facilities for our patrons and performers. Please specify needs at time of purchase. For additional information, please contact the Box Office.

Directions

For patrons using a GPS device for directions, please enter the following address: 200 Barlow Road, Fairfield, CT 06824

Once at 200 Barlow Road, enter through the stone gates and take the second right at the pond. The Quick Center will be on the left, and the parking lot will be on the right. Additional parking lots are located behind the Quick Center – see map below.



3. Choose Your Series

The Met: Live in HD

Check the desired number of events and circle the applicable price:

SUBSCRIPTION	PRICE	# OF SUBSCRIPTIONS =	TOTAL
___ 10 events (\$19/tix)	\$190	_____	_____
___ 8-9 events (\$20/tix)	\$160, \$180	_____	_____
___ 5-7 events (\$21/tix)	\$105, \$126, \$147	_____	_____

Check dates & times below

10/11 ___ 1pm ___ 6pm	12/16 ___ 12pm	3/14 ___ 1pm ___ 6pm
10/18 ___ 1pm ___ 6:30pm	1/17 ___ 1pm ___ 6pm	4/25 ___ 12:30pm ___ 6pm
11/1 ___ 1pm ___ 6:30pm	1/31 ___ 1pm ___ 6:30pm	
11/16 ___ 1pm ___ 6pm	2/15 ___ 1pm ___ 6:30pm	

Regular price single tickets \$25 x _____
Total – The Met: Live in HD Series _____

Classical – 5 performances

The Garden of Martyrs, Orin Grossman and Friends, Bridget Kibbey, Chamber Music Society of Lincoln Center, The Mendelssohn Choir of Connecticut

Section	# of Subscriptions =	Total
___ Section A (\$156) x	_____	_____
___ Section B (\$152) x	_____	_____
___ Section C (\$124) x	_____	_____

Choose one *The Garden of Martyrs* Performances: ___ 9/27 at 8 p.m. ___ 9/28 at 3 p.m.
Total – Classical Series _____

Concerts – 6 performances

Nancy & Beth, Vijay Iyer Trio, The Touré-Raichel Collective, Mark O'Connor's *Appalachian Christmas*, Irvin Mayfield & The NO Jazz Orchestra, Time for Three

Section	# of Subscriptions =	Total
___ Section A (\$224) x	_____	_____
___ Section B (\$196) x	_____	_____
___ Section C (\$172) x	_____	_____

Total – Concerts Series _____

Inside the Box – 3 performances

Nick Sanders Trio ___ 7 p.m. or ___ 9 p.m., Jazzmeia Horn ___ 7 p.m. or ___ 9 p.m., Shana Tucker ___ 7 p.m. or ___ 9 p.m. (All performances General Admission)

General Admission	# of Subscriptions =	Total
___ All 3 performances (\$72) x	_____	_____

Total – Black Box Series _____

Dance – 3 performances

From the Heart! Ballroom Extravaganza, Ballet Hispanico, Russian National Ballet

Section	# of Subscriptions =	Total
___ Section A (\$112) x	_____	_____
___ Section B (\$96) x	_____	_____
___ Section C (\$80) x	_____	_____

Total – Dance Series _____

Theatre for Everyone! – 5 performances

Broadway's Next Hit Musical, *A Celebration of Harold Pinter*, *It's a Wonderful Life*, *Mummenschanz*, *Alvin Sputnik: Deep Sea Explorer* (General Admission)

Section	# of Subscriptions =	Total
___ Section A (\$168) x	_____	_____
___ Section B (\$148) x	_____	_____
___ Section C (\$128) x	_____	_____

Choose one *Mummenschanz* Performance: ___ 1/24 at 2 p.m. ___ 1/24 at 8 p.m.

Choose one *Alvin Sputnik* Performance: ___ 2/6 at 6 p.m. ___ 2/6 at 8 p.m.

___ 2/7 at 5 p.m. ___ 2/7 at 8 p.m.
Total – Theatre for Everyone! Series _____

FAMILY FUN – 3 performances

Subscription Type	# of Subscriptions =	Total
___ All 3 lectures (\$36) x	_____	_____

Total – Family Fun Series _____

Open VISIONS Forum – 6 lectures

Subscription Type	# of Subscriptions =	Total
___ All 6 lectures (\$228) x	_____	_____

Total – Open VISIONS Forum Series _____

MY PICKS – Select at least 4 applicable performances and save 20%!

Date/Time	Event	Price x Number of Tix = Subtotal	Subtract 20%	Grand Total

2014-15 Discount Grid

The following performances are not eligible for MY PICKS Subscriptions: Open VISIONS Forum, The Met: Live in HD, National Theatre Live, and Orchestra in HD.

Regular Full Ticket	Senior (65+) & Child (2-12)	Subscriber Discount
\$55.00	\$49.50	\$44.00
\$50.00	\$45.00	\$40.00
\$45.00	\$40.50	\$36.00
\$40.00	\$36.00	\$32.00
\$35.00	\$31.50	\$28.00
\$30.00	\$27.00	\$24.00
\$25.00	\$22.50	\$20.00
\$15.00	N/A	\$12.00

I received this Quick Center brochure in my CT Post.

4. Total

Subtotal for all Subscriptions _____
Handling Fee: Add \$2 per ticket (maximum: \$16 per order)
(Members do not pay a handling fee)
Quick Center Membership Level (see page 21 for more information)
Fully tax-deductible donation in support of Fairfield University's Quick Center
TOTAL ENCLOSED _____
Thank you!
Please see page 23 for instructions on submitting your order.

Enhance Your Experience

Single Tickets

Single tickets will go on sale **Monday, June 9** for Members at the 'Friend' Level and above and on **Monday, June 23** for the General Public.

Special Offers!

Learn more about our special offers by visiting www.quickcenter.com! Discounts are offered to: Fairfield University students, faculty, adjunct faculty, staff, University retirees, senior citizens, and even alumni! Please note that Photo ID is often required for discounts. In addition, there are some exceptions. (Discounts do not apply to rentals or student events at the Quick Center for the Arts.)

Group Discounts

Bring a group of 10 or more and receive big discounts! For more information, please contact our Box Office at (203) 254-4010 or toll-free 877-ARTS-396.

Fairfield University Students

Fairfield University students can purchase tickets to Quick Center performances for just \$5 with their Stag ID. Quantities of available \$5 student tickets will be limited on a show-by-show basis as noted by the * throughout the brochure. This amazing deal lets students see live performances from the best musicians, dancers, and actors in the world for less than the price of a movie ticket.

NEW! \$25 for 30 and Under 25 30

Blown away by the amazing artists in this year's line up? Under 30 and think you don't have the cash? Make an investment in your cultural capital by attending our performances as part of our \$25 for 30 and Under offer. Events listed with the symbol above are included and offer you the best seats in the house for only \$25*.

*Up to two tickets per event. Photo ID required at the time of purchase.

Concessions

The Quick Center offers an array of beverages and treats prior to our events. Come early to a show and enjoy wine, beer, soft drinks, a coffee bar, and snacks. In addition, we offer Einstein Bros Bagels and breakfast goodies prior to our The Met: Live in HD events.



Photo Credits:

Cover	Time for Three/Vanessa Briceno-Scherzer
Pages 1 & 2	Monica Scarlato/Johanna Barreto
Page 4	Nancy & Beth/Eric Schwabel
Page 5	<i>The Garden of Martyrs</i> /Rob Kimmel, Julian Sands/ courtesy of the artist
Page 6	Orin Grossman/Jean Santopatre, Nick Sanders Trio/ Elan Asch
Page 7	Vijay Iyer Trio/Jimmy Katz, The Touré-Raichel Collective/ Nitzan Treystman
Page 8	Mark O'Connor/courtesy of the artist, WVL Radio Theatre/Scott Treadway
Page 9	Mummenschanz/courtesy of the artist, <i>The Adventures of Alvin Sputnik</i> /Michelle Robin Anderson
Page 10	Bridget Kibbey/Ronald James, Jazzmeia Horn/ Steve Hockstein
Page 11	Ballroom Extravaganza/courtesy of the artist, Ballet Hispanico/Paula Lobo
Page 12	Irvin Mayfield/Greg Miles, Time for Three/Neilsen Barnard
Page 13	Shana Tucker/Michael McCullough, Russian National Ballet Theatre/Larisa Pedenchuk
Page 14	Amphion String Quartet/Janette Beckman, The Mendelssohn Choir/courtesy of the artist
Pages 17	David Gregory, Robert Edsel, Caryl Stern/courtesy of & 18 Greater Talent Network, Alessandra Stanley, Frank Bruni/ courtesy of <i>The New York Times</i>
Page 19	Renée Fleming and Nathan Gunn in <i>The Merry Widow</i> / Brigitte Lacombe
Page 20	<i>The Pirate Plays</i> /courtesy of the artist
Back Cover	Ballet Hispanico/Eduardo Patino



Quick Center
for the Arts

1073 North Benson Rd.
Fairfield, CT 06824-5195

www.quickcenter.com



IMPORTANT TICKETING DATES

Sunday, May 4	Subscriptions on Sale
Monday, June 9	Single Tickets on Sale – Members* Only
Monday, June 23	Single Tickets on Sale to the General Public

**Benefit for Members at the 'Friend' Level and above*